

1. INTRODUCTION ABOUT THE PROJECT

The project titled as “GP-Desk “is a web based application. It shows the main details about the college. The clients can connect to the server. Each user first makes their login to server to show their availability. The server can be any Web Server. An SMTP Server must be maintained for temporary storage of emails and chat jar files for enable the chatting facilities. The main modules in this project.

Modules

- Principal
- Students
- Staffs
- Alumni Association
- Parents

The visitor module includes,

- Visitor can able to see the home page of the college web site
- Department details, facilities in the college, features of the college ,contact details
- Also visitor can able to know about the courses, admission, details, fee details, notification, pass out details, college performance, placement and downloads

The registered user module includes,

- Principal
- Head of the Department
- Teaching staff & Non teaching staffs
- Staff in the office
- Students
- Alumni
- Parents.

Each module has special different facilities.

- **Principal**

Principal have a complete control on all the sub modules.

- **View :** This module helps the Principal to view the head of the department details, Students details, Staff details, Parents and the Alumni details.
- **View and delete registered feedback:** This module helps the Principal to add and delete registered feedback
- **Add, delete and view persons:** This module helps the Principal to add, delete and view person details
- **Add and view registration:** This module helps the Principal to add and view registrations in the field of Head of the department, Students, Parents, Staff and Alumni
- **Add and view Reports:** This module helps the Principal to add and view reports
- **View and delete all complaint reply:** This module helps the Principal to view and delete complaint reply.
- **View students report:** This module helps the Principal to view students reports
- **Change password:** This module helps the Principal to update his or her password
- **Chat:** This module help the Principal to chat with the Head of the Department
- **Mail:** This module helps the Principal to send mail to the Department.

The Registered module includes,

- **Head of the Department**

The Head of the Department have a complete control on all the sub modules only.

- **View:** This module helps the Head of the Department to view, Students details, Staff details, Parents and the Alumni details.

- View and delete registered feedback: This module helps the Head of the Department to add and delete registered feedback.
 - Delete and view persons: This module helps the Head of the Department to delete and view Students, Staff, Parent, Alumni details
 - Add and view registration: This module helps the Head of the Department to add and view registrations in the field of Students, Parents, Staff and Alumni
 - Upload and view Reports: This module helps the Head of the Department to add and view reports
 - View and delete all complaint reply: This module helps the Head of the Department to view and delete complaint reply.
 - View students report: This module helps the Head of the Department to add and students reports
 - Change password: This module helps the Head of the Department to update his or her password
 - Chat: This module help the Head of the Department to chat with the Principal
 - Mail: This module helps the Head of the Department to send mail to the Principal.
- Students

The Students have restricted facilities.

- View: This module have only view the details of the all the application form offered to them.
- Add and view registration: This module helps the Students to add and view registrations in the field of Students only.
- View Uploaded Reports: This module helps the Students to view reports
- View students report: This module helps the Students to view students reports
- Change password: This module helps the Students to update his or her password

- Staff

The Staff have restricted facilities.

- View: This module have only view the details of the all the application form offered to them.
- Add and view registration form: This module helps the Staff to add and view registrations in the field of Staff only.
- View Reports and Notifications: This module helps the Staff to view reports
- View students report: This module helps the Staff to view students reports
- Change password: This module helps the Staff to update his or her password.

- Parents

The Parents have restricted facilities.

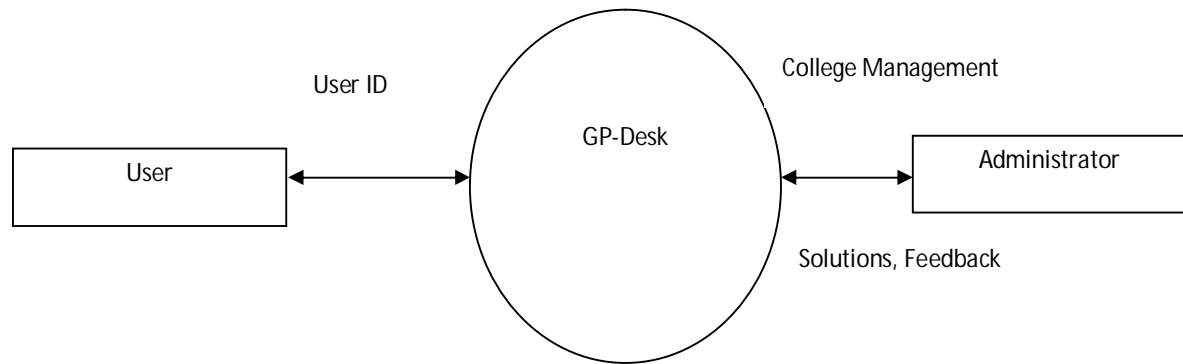
- View: This module have only view the details of the all the application form offered to them.
- Add and view registration form: This module helps the Parents to add and view registrations in the field of Parents only.
- View Reports and Notifications: This module helps the Parents to view reports
- View students report: This module helps the Parents to view students reports
- Change password: This module helps the Parents to update his or her password.

- Visitors

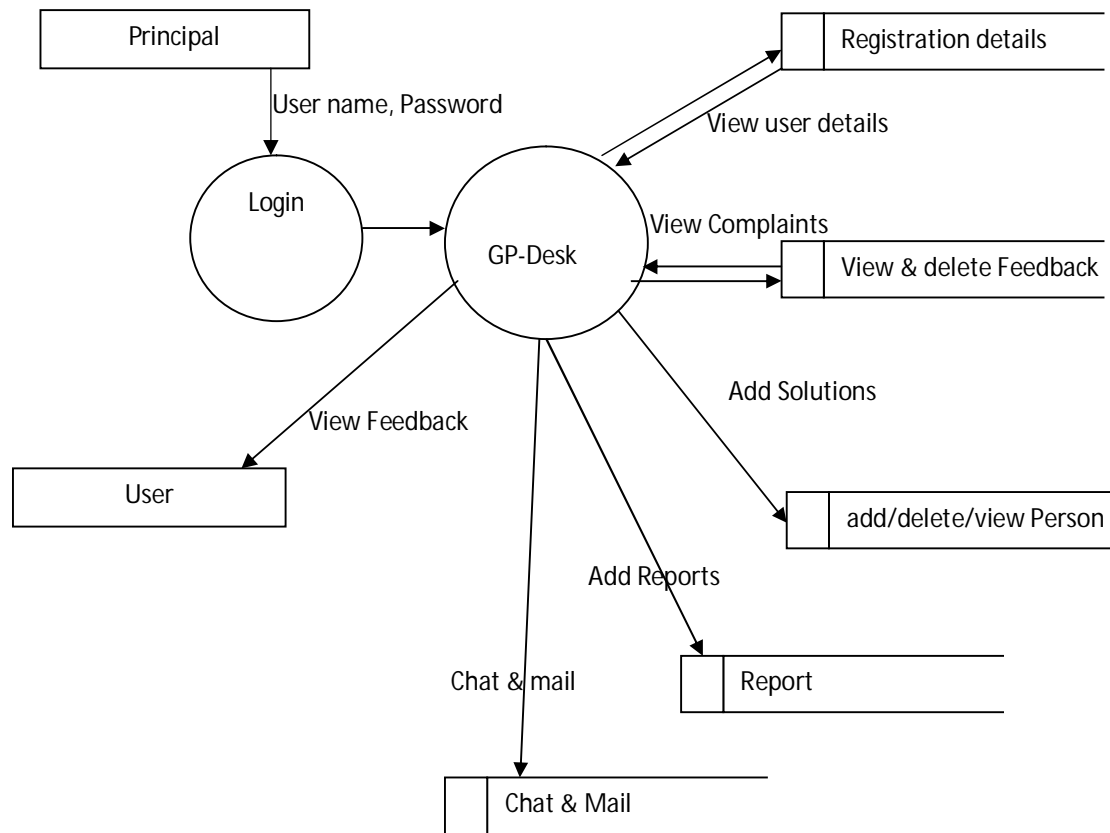
The Visitors have the facility to view the home page, department details, facilities of the college, features, and contact details.

Data Flow Diagram

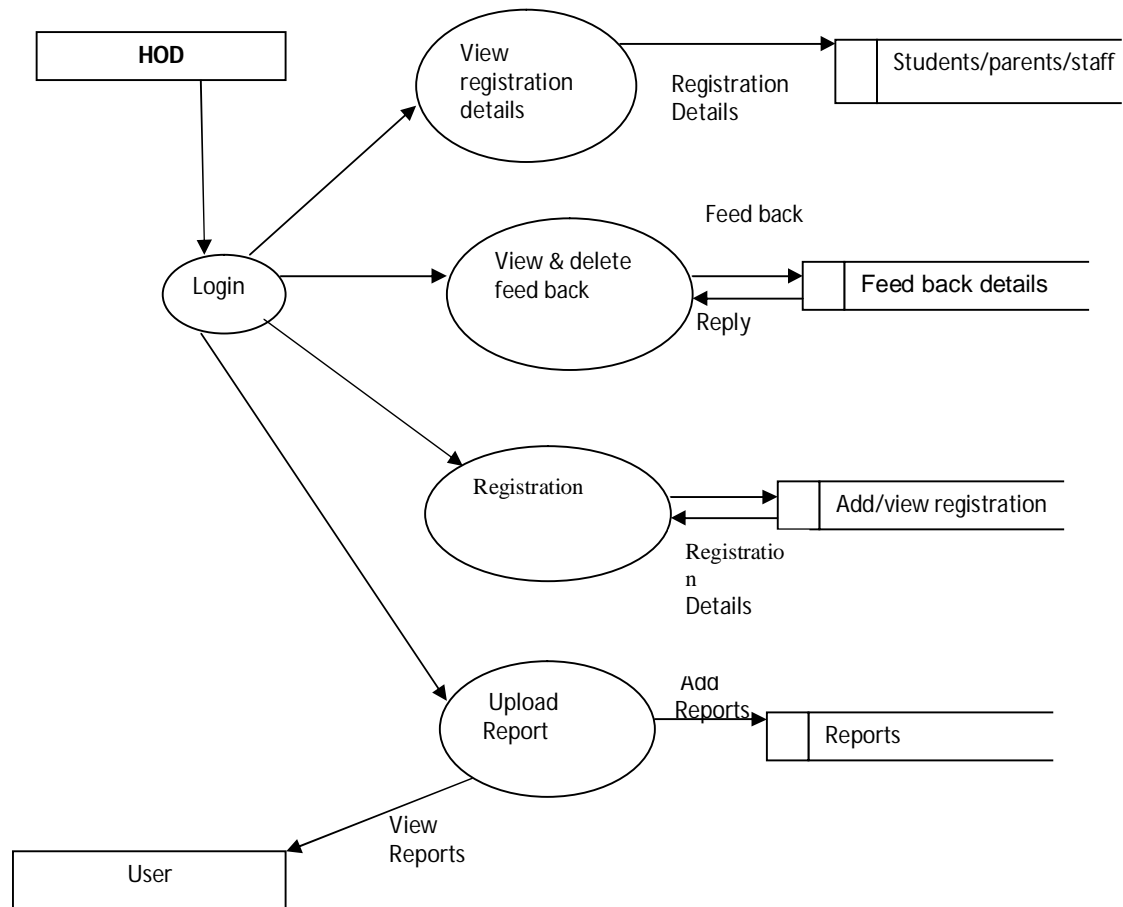
Context flow diagram



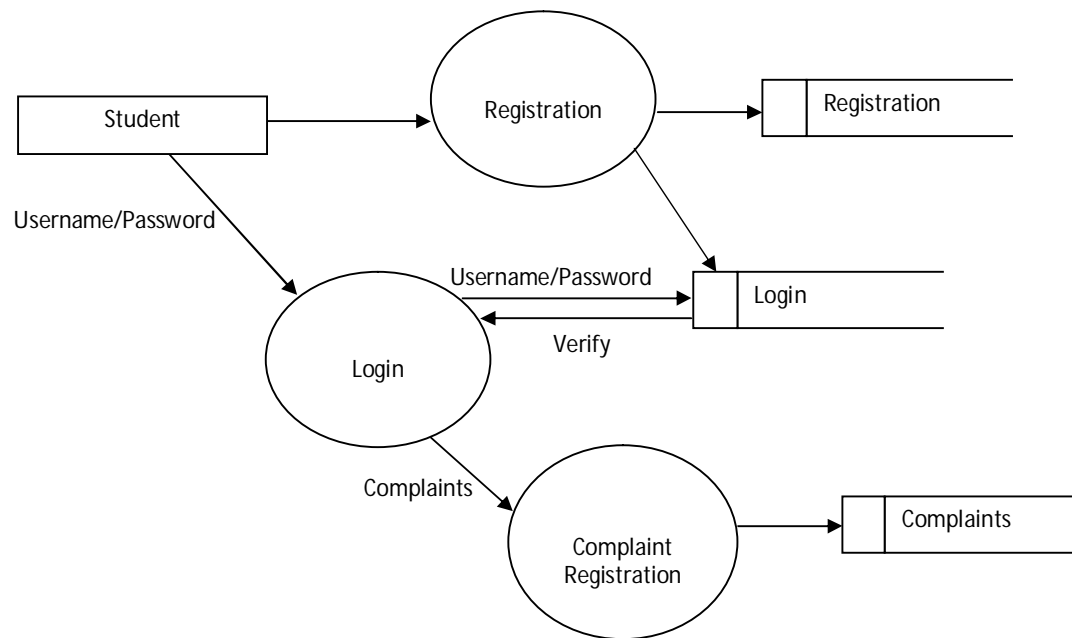
Level 1 DFD- Principal



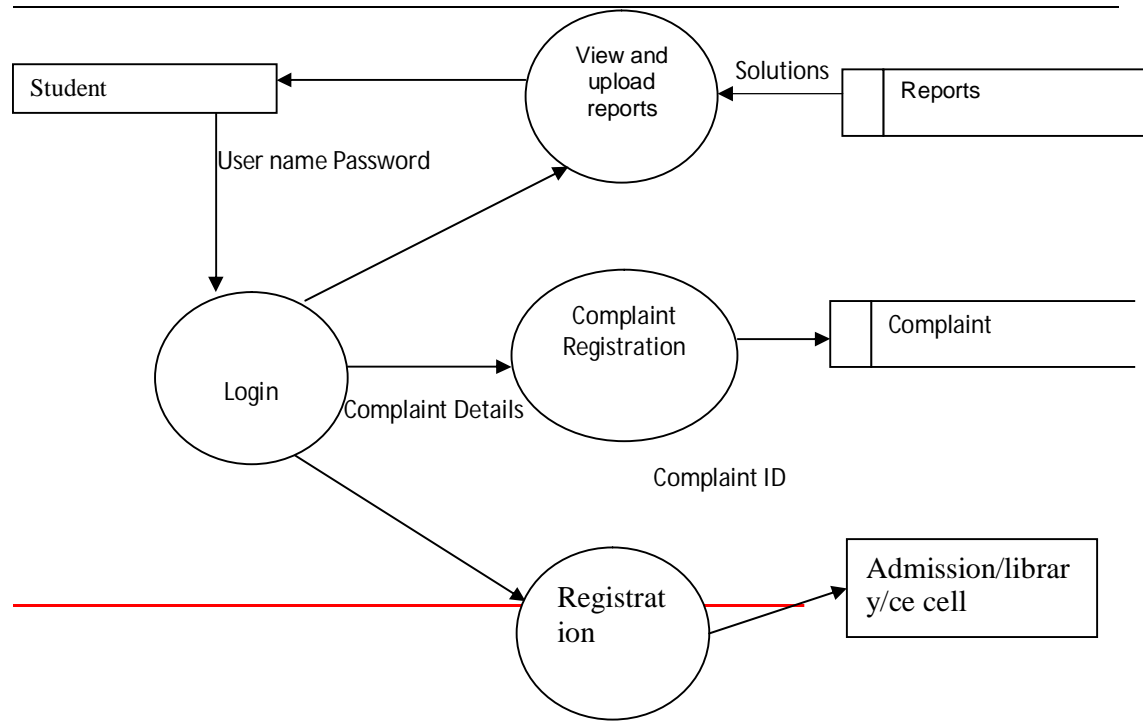
Level 2 DFD- HOD

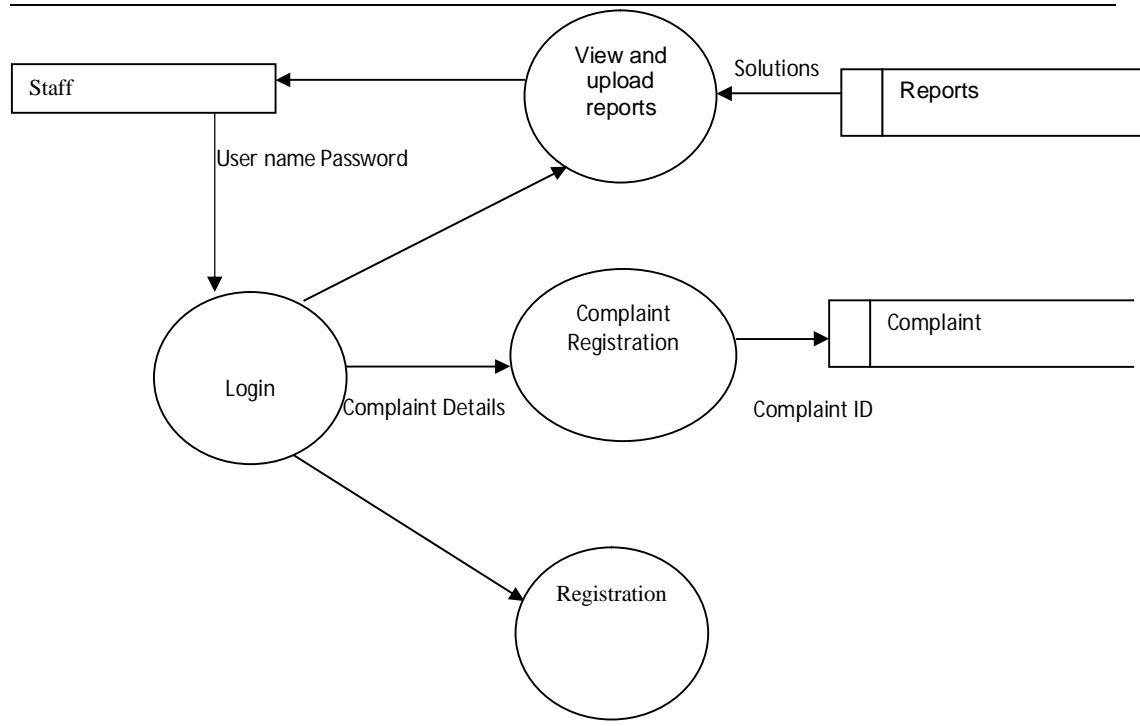


Level 3 DFD- Student

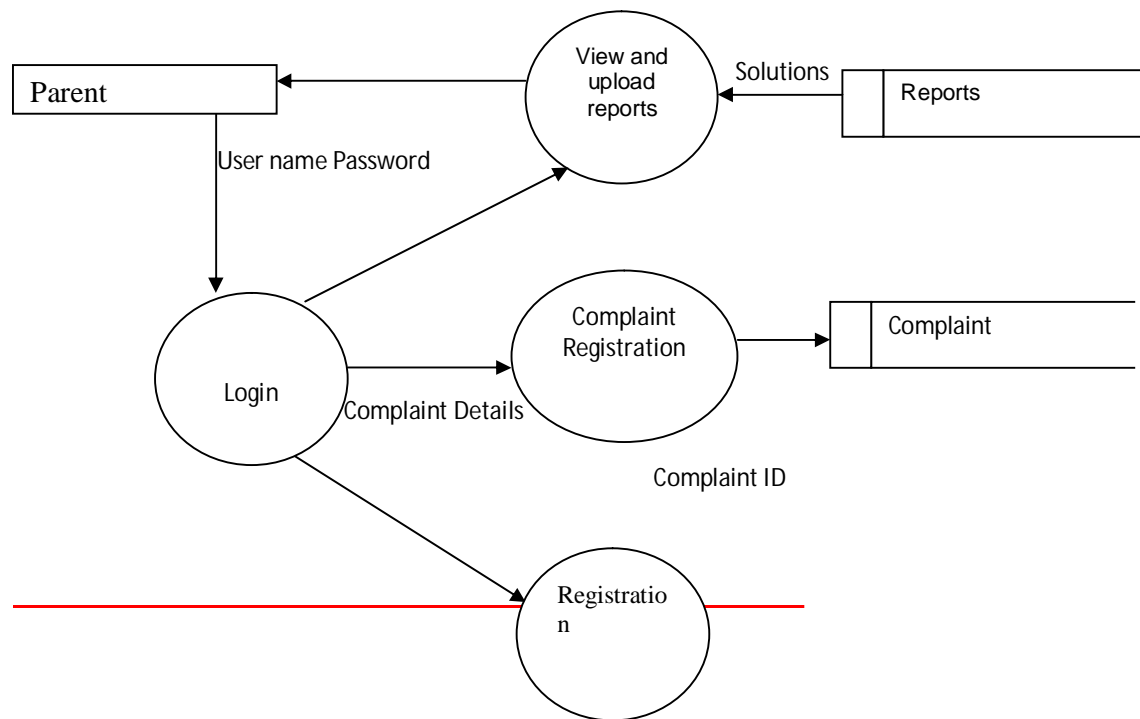


Level 4 DFD- Student





Level 6 DFD- Parents



Level 7DFD- Alumni

