

INTRODUCTION

About the project

Digital Signage is Software that shows advertisements and information on a digital TV in Railway Stations, Bus stations, and other Public places. The user specifies the date, time, the video file, the image file and text to the software. The software shows the advertisements at the scheduled time.

Functionalities in the Project

- Different types of templates
- Specify the time and date with template ID
- View the play list
- View the LOG
- Minimize to tray
- Edit details and templates

This software is mainly divided into six

1. LOGIN

This includes Administrator login. There will be a username and password to login into the system to use the Digital Signage software. Administrator will also have the option to change the password.

2. DIFFERENT TYPES OF TEMPLATES

This module helps us to create different types of templates with a unique template id. For example, Video-Image-Text, other template will be Image-Video-Text etc...

3. SPECIFY TIME AND DATE WITH TEMPLATE ID

Here the user can specify time period and date. When that particular moment comes the details will be shown as per the template chosen.

4. VIEW THE PLAY LIST

This is an additional feature of our software. We can view the list of all video files that are in queue to play and we can also see the preview.

5. VIEW THE LOG

This module allows us to view the log. The log will be saved in our system, the log contains details like when the file has been played and the date and time.

6. MINIMIZE TO TRAY

An extraordinary feature in the project. We can minimize the application to our system tray. The application will always be running in the system background.

EXISTING SYSTEM

In the present system all the works done manually, that is if a customer want to include his advertisement in the system he has to give his CD containing the advertisement to the person who controls the present system, and also the person in charge of controlling the system will be available with the system to play the advertisement when the scheduled time reaches.

The present system may be a system using flex, banners for advertisement or be digital system using display monitor and a CD player. Since it not computerized it is not flexible to manage. If some technical problems arise the system will go halt, which is if the CD is corrupted it won't work.

Since it is manual the process involved is time consuming, that is if we computerize the system then this time consumption can be reduced and this time can be used to play more advertisements in a day and that will bring more throughputs.

LIMITATIONS OF EXISTING SYSTEM

- Lack of security of data.
- Time consuming.
- Consumes large volume of paper work.
- Needs manual calculations of bill.
- No direct role for the higher officials.

To avoid all these limitations and make the system working more accurately it needs to be computerized.

PROPOSED SYSTEM

In the proposed system about 90% of the existing system is being computerized. All the Works are done automatically, no need of much manual work; only manual work needed is scheduling the advertisement by entering the details into the system. While compared to existing system this system include different formats for presenting the advertisements, that it provides different templates to insert the picture, video and text. So that the specified advertisements are displayed in the scheduled time.

OBJECTIVES OF PROPOSED SYSTEM

The digital signage software is user-friendly software. The main objectives of the system is to provide an efficient and convenient way of producing advertisements in the scheduled time. The field of digital signage has undergone tremendous progress because of constant advance in commercial and communication technology.

The main objectives of the proposed system can be enumerated as follows:

- Display the advertisements in proper time without any manual interruption.
- Automatic bill calculation.
- System provide different template to display the advertisements.

ADVANTAGES OF PROPOSED SYSTEM

The system is very simple in design and to implement. The system requires very low system resources and the system will work in almost all configurations. It has following advantages.

- Security of data.
- Ensure data accuracy's.
- Administrator controls the entire system.
- Reduce the damages of the machines.

- Minimize manual data entry.
- Greater efficiency.
- User friendly and interactive.
- Minimum time required.

SOFTWARE REQUIREMENT SPECIFICATIONS

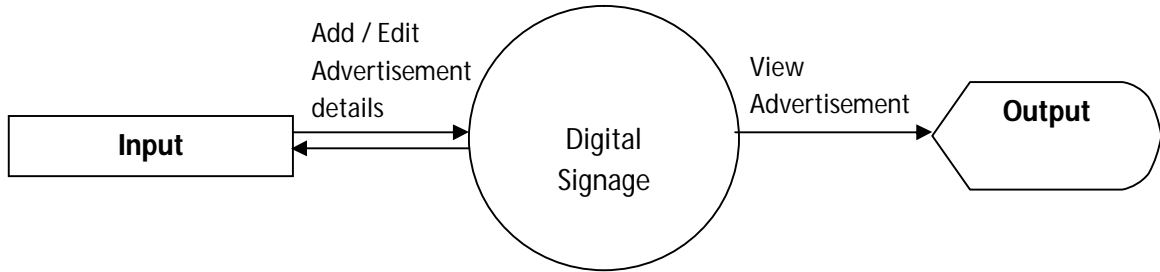
SOFTWARE REQUIREMENT

Operating System	:	Windows 2000/XP
Font end	:	Visual Basic 6.0
Back end	:	MS Access
Design Tool	:	Data Flow Diagram

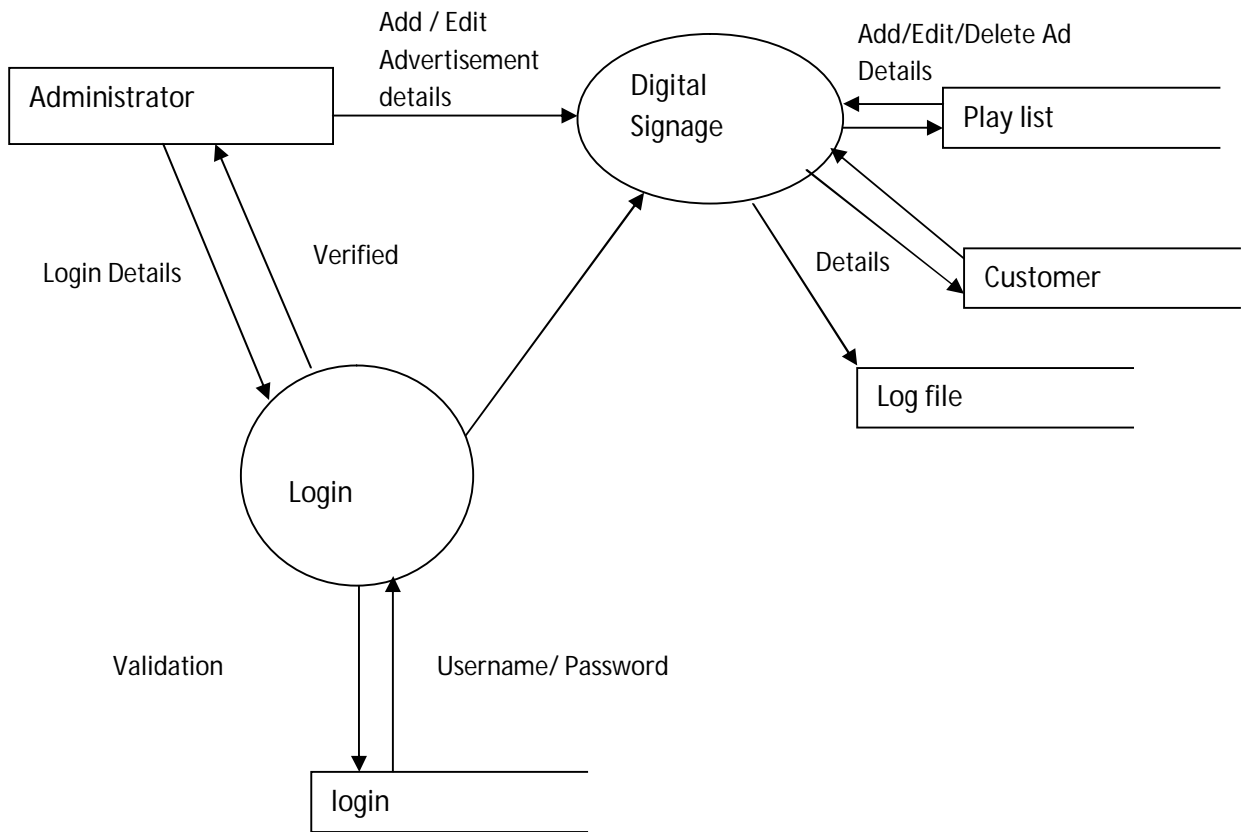
HARDWARE REQUIREMENT

Processor	:	X86 Compatible processor with 1.7 GHz Clock speed
RAM	:	512 MB or more
Hard disk	:	20 GB or more
Monitor	:	VGA/SVGA
Keyboard	:	104 Keys
Mouse	:	2 buttons/ 3 buttons

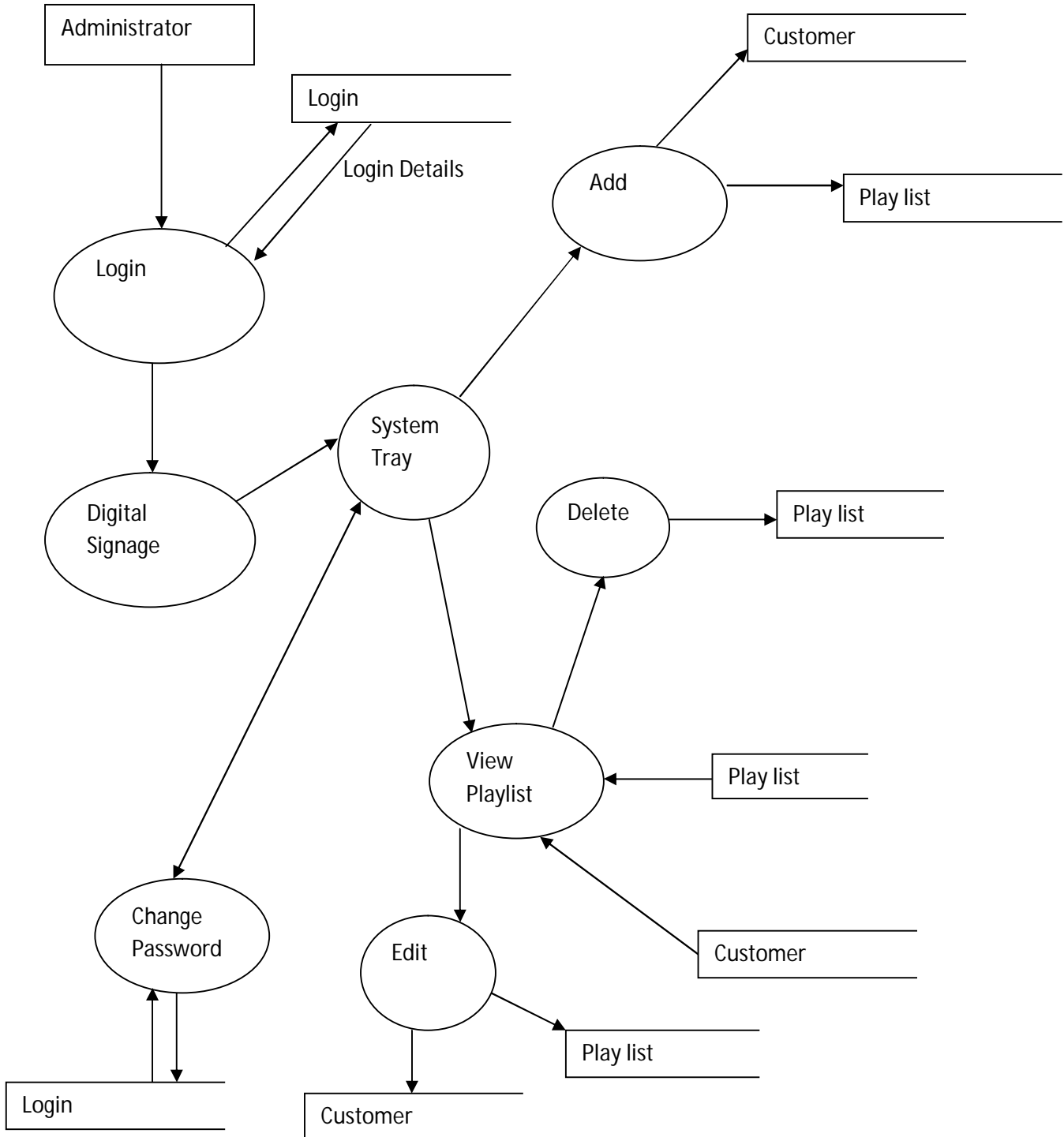
DFD 0 LEVEL



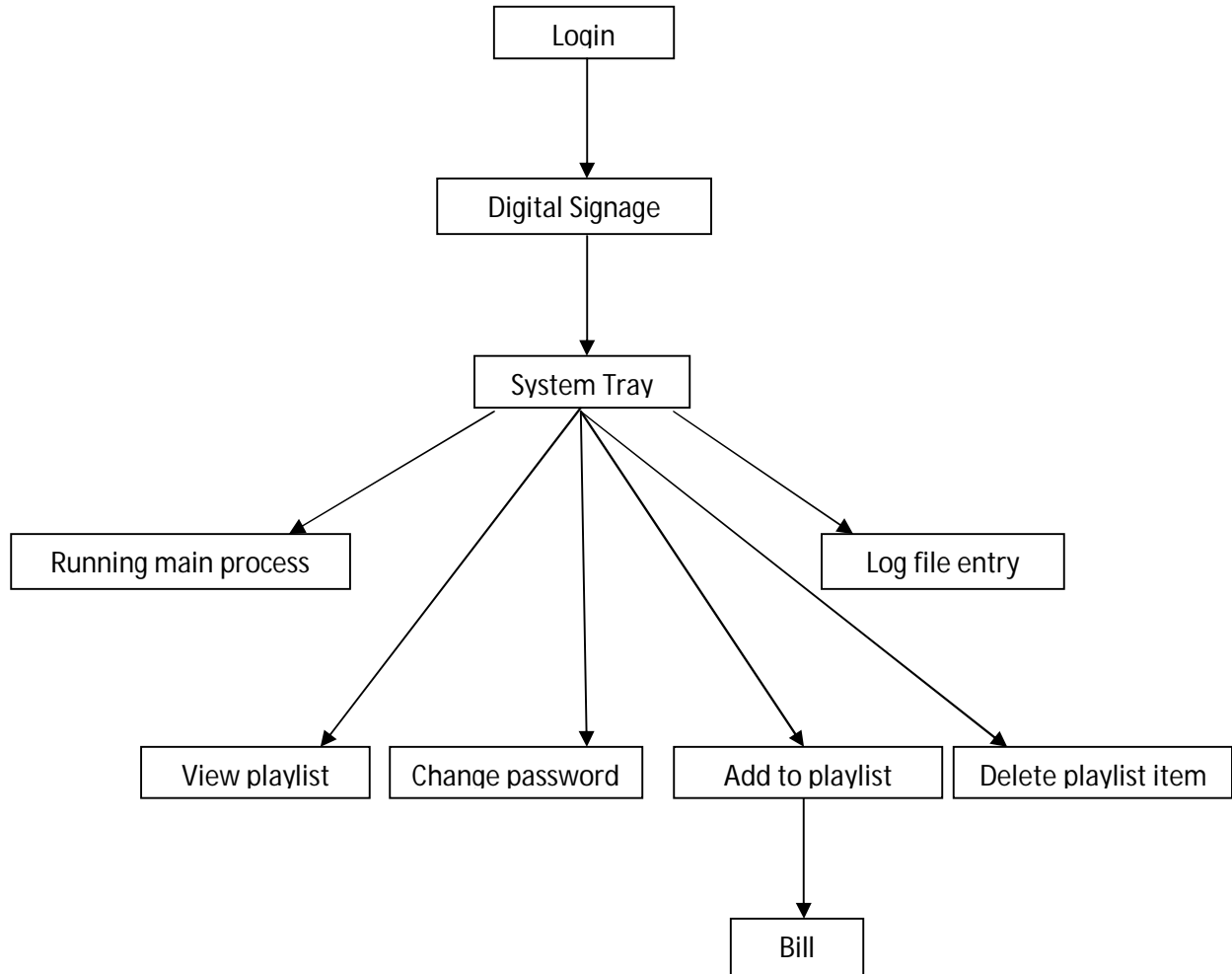
DFD 1 LEVEL



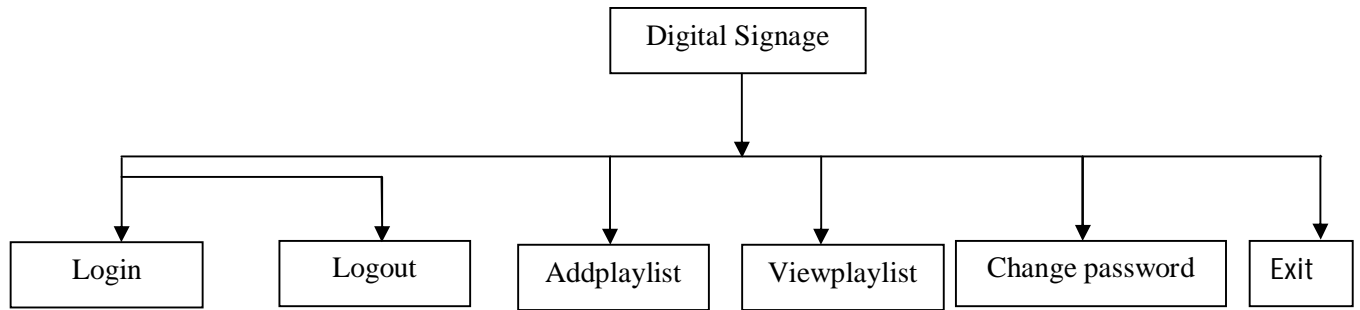
DFD 2 LEVEL



SYSTEM STRUCTURE CHART



MENU TREE



GANTT CHART

